

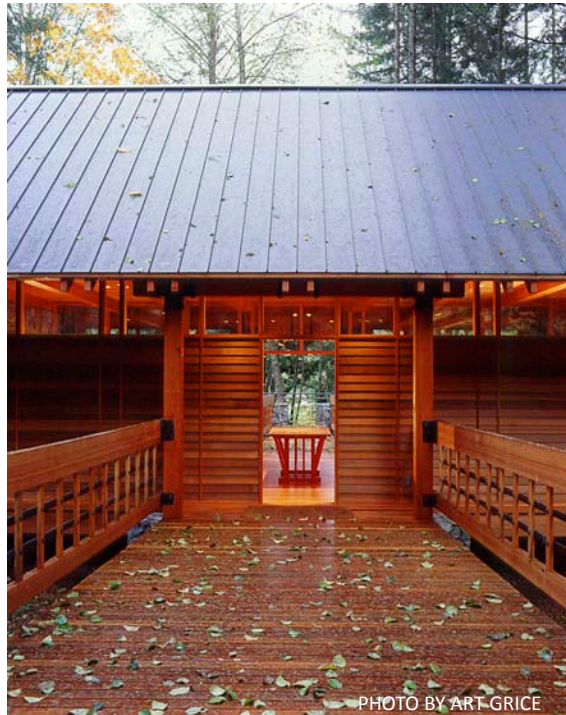
Tour of Architects

Bainbridge Island and Seattle



An Architectural Tour as Diverse as Your Dreams!

March 19 & 20, 2011



SEATTLE HOMES
& LIFESTYLES



aia seattle



Schedule of

EVENTS

March 18

FRIDAY

Gala Reception and Kick-off Party!

Design Within Reach, 6:30 - 8:30pm | 1918 First Avenue, Seattle, WA 98101

NO ADMISSION CHARGE

March 19

SATURDAY

BAINBRIDGE ISLAND

Design Conference at the Pavilion -9am - 1pm

Featured Speakers:

10:30 am, James Cutler, FAIA - Designing the Education Center at Bloedel

11:30 am, Molly McCabe, Positive Trends in Sustainable Design

MY ARCHITECT - A Son's Journey | Bainbridge Cinemas, 5:00 pm

TICKETS: \$12.00

TOUR ONE

PROJECTS OPEN 11am - 4pm

Peter Brachvogel, BC & J Architecture presents Puget Sound View House

Stella Carosso, BC & J Architecture presents Sunrise Beach House

Marc LaRoche, Marc LaRoche Architects presents Eagle Harbor Waterfront

Marc LaRoche Architects presents Blakely Harbor Residence

Cihan Anisoglu, A2 Architecture presents The Innkeepers Residence

Bloedel Reserve presents...

Virginal Merrill Bloedel Educational Center, designed by James Cutler, FAIA

The Bloedel Visitor Center, designed by J. Lister Holmes

The Japanese Guest House, designed by Paul Hayden Kirk

TICKETS: \$20.00

March 20

SUNDAY

SEATTLE | TOUR TWO

PROJECTS OPEN 11am - 4pm

LOOP ONE - Mt. Baker neighborhood, Mercer Island and Bellevue

Lane Williams, COOP 15 presents Mercer Island Redux

Steve Bull, Workshop AD & Lair Design present the Colman Triplex

Brian Brand, Baylis Architects presents An Urban Retreat

LOOP TWO - Ballard, Phinney Ridge, Wallingford, Blue Ridge

Devin Johnson, Johnson Squared presents Ballard House

Brian Palidar, Grouparchitect presents Ballard Remodel

David Biddle, Pb Elemental Design LLC presents Phinney Ridge House

David Coleman, FAIA, David Coleman Architecture presents the Tower House,

Wallingford

Julie Campbell/ Buzz Tenenbom, CTA Design Builders present Blue Ridge

Remodel

Carol Sundstrom, röm architecture studio presents Magnolia Mad Mod



Welcome to the Tour of ARCHITECTS

Welcome to the **TOUR OF ARCHITECTS**, produced by **GEM, LLC**, in partnership with our sponsors **Seattle Homes and Lifestyles**, **AIA Seattle** and **Design Within Reach**.

The **Tour of Architects** is a two-day event featuring Two Unique Tours. ***This is an Architectural Tour That is as Diverse as Your Dreams!***

This year, we are pleased to expand our boundaries from Bainbridge Island into the Seattle Metropolitan Region, including Bellevue, Mercer Island, Mt. Baker neighborhood, Ballard, Wallingford, Blue Ridge, Phinney Ridge and Magnolia. As we expand the territory, it is our hope that we will help raise awareness of architects and architecture.

Perhaps the most valuable experience you will gain is the experience of entering into a designed space, and meeting the architects who helped their clients become reality. Many of the projects will also be co-hosted by building contractors and sub-contractors, and you will get a sense of the team who made the projects come alive.

In addition to contemporary architecture, we are pleased to introduce projects of historic significance at Bloedel Reserve, designed by J. Lister Holmes and Paul Hayden Kirk. Bloedel is world-renowned for their gardens, but few know of the significant architectural heritage on the site. A portion of ticket sales for will be donated to Bloedel Reserve for architectural preservation.

Homeowners and participants are unbelievably generous to open their homes and projects to the public. Out of respect for them, we ask that you leave your backpacks and purses in the car. No cameras are allowed and children must be supervised. You will be required to take off your shoes and wear foot protectors (which will be provided.)

We hope that you enjoy the unique opportunity to explore - and celebrate - great architecture and design.



Very truly yours,

Elizabeth Gadbois, Owner
GEM, LLC
Events, Marketing &
Public Relations

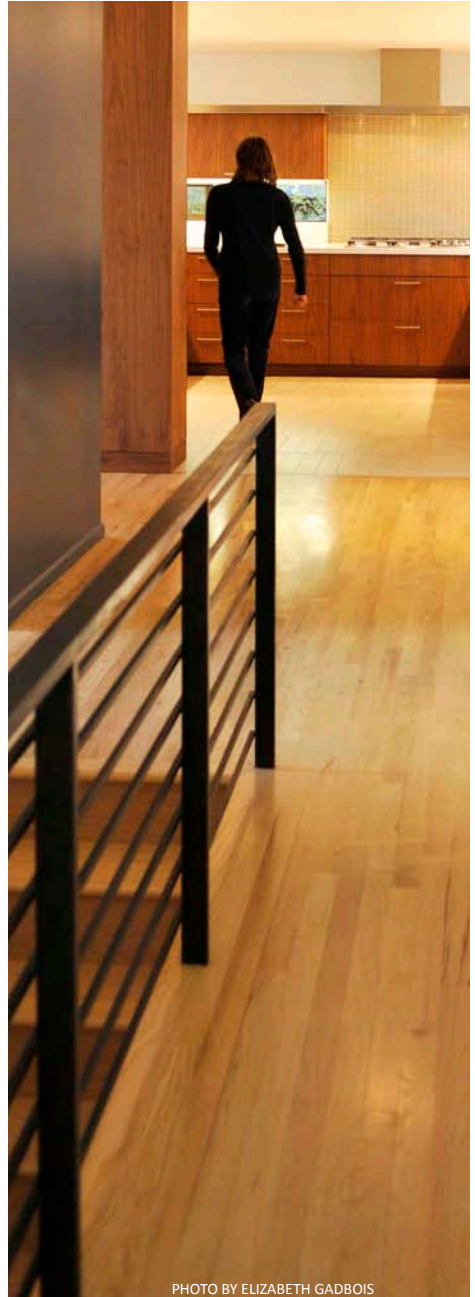


PHOTO BY ELIZABETH GADBOIS

TOUR ONE Bainbridge Island

A Eagle Harbor Waterfront

PRESENTED BY:

Marc LaRoche

DESIGNED BY:

Marc LaRoche Architects



B Puget Sound View House

PRESENTED BY:

Peter Brachvogel, AIA

DESIGNED BY:

BC&J Architecture



C The Innkeepers Residence

PRESENTED BY:

Cihan Anisoglu

DESIGNED BY:

A2 - Architecture, Art and Ideas



D Sunrise View House

PRESENTED BY:

Stella Carosso

DESIGNED BY:

BC&J Architecture



E Port Blakely Residence

PRESENTED BY: Trina LaRoche

DESIGNED BY:

Marc LaRoche, Architect
Trina LaRoche, Interiors
Marc LaRoche Architects



F Virginia Merrill Bloedel Education Center

PRESENTED BY: Bloedel Reserve

DESIGNED BY:

James Cutler, FAIA
Cutler Anderson Architects



TOUR ONE Bainbridge Island

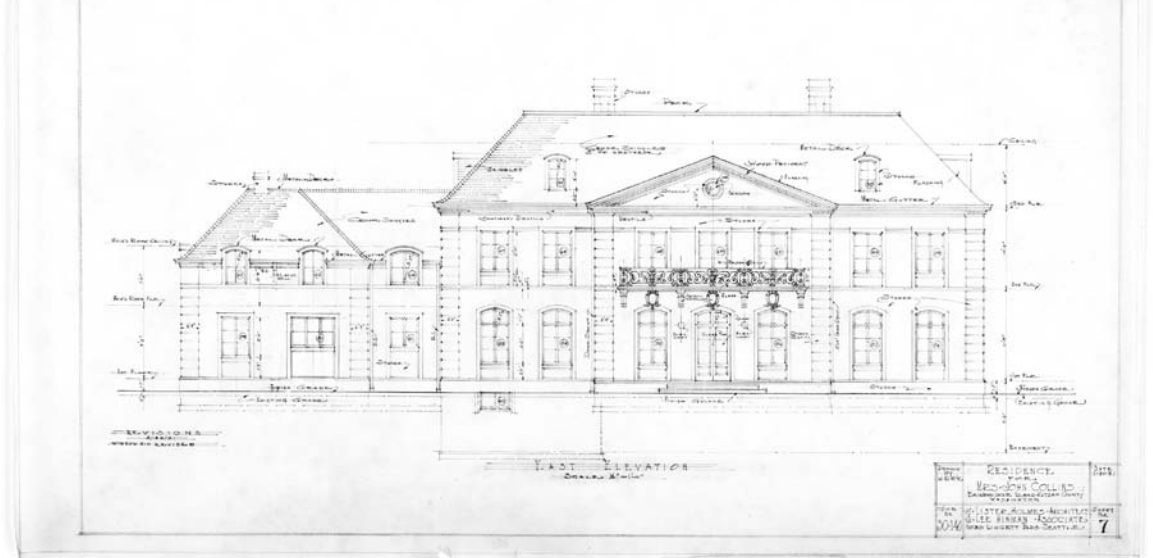
G **Guest House in the Japanese Garden**
PRESENTED BY: Bloedel Reserve
DESIGNED BY:
Paul Hayden Kirk, Architect



H **Visitor Center at Bloedel Reserve**
PRESENTED BY: Bloedel Reserve
DESIGNED BY:
J. Lister Holmes, Architect



ARCHITECTURAL RENDERINGS EXHIBIT VISITOR CENTER & JAPANESE GUEST HOUSE BLOEDEL RESERVE, MARCH 1 - 31, 2011



Rendering by J. Lister Holmes, East Elevation, Visitor Center - Bloedel Reserve

TOUR TWO

Loop One

A

An Urban Retreat

PRESENTED BY:

Brian Brand, AIA

DESIGNED BY:

Baylis Architects



B

Mercer Island Redux

PRESENTED BY:

Lane Williams, AIA

DESIGNED BY:

Coop 15



C

Colman Triplex

PRESENTED BY: Steve Bull, AIA

DESIGNED BY:

Workshop AD | Lair Design



D

Ballard House

PRESENTED BY:

Devin Johnson, Architect

DESIGNED BY:

Johnson Squared



TOUR TWO

Loop Two

E

Ballard Remodel

PRESENTED BY:

Brian Palidar, AIA

DESIGNED BY:

Grouparchitect



F

Phinney Residence

PRESENTED BY:

David Biddle

DESIGNED BY:

Pb Elemental Design



G

Tower House in Wallingford

PRESENTED BY:

David Coleman, FAIA

DESIGNED BY:

David Coleman Architecture



H

Blue Ridge Remodel

PRESENTED BY:

Julie Campbell, AIA

Buzz Tenenbom, AIA

DESIGNED BY:

CTA Design Builders



I

Magnolia Mid-Mod

PRESENTED BY:

Carol Sundstrom, AIA

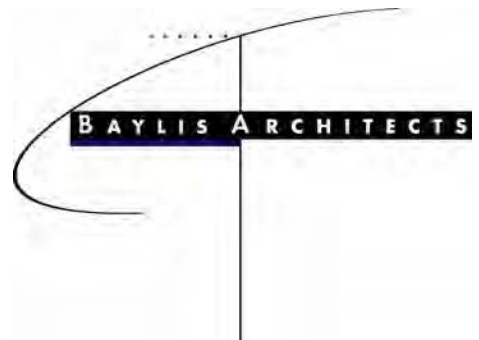
DESIGNED BY:

röm architecture studio

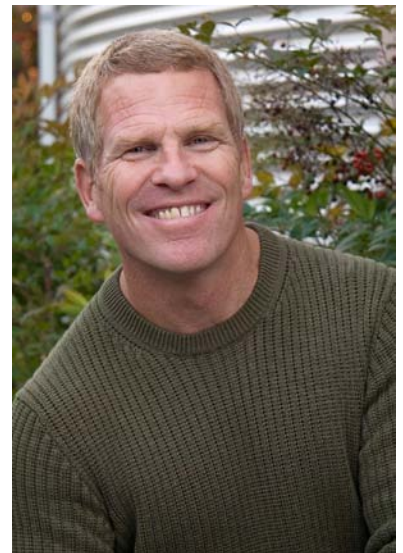


BAYLIS ARCHITECTS firm profile

For over 39 years Baylis Architects has been designing custom homes in the Northwest. Our work is about design; sculpting the form of a building; about the nature of the unique Northwest light, the use of materials and the craft involved in assembling those materials. We work with the greatest care and sensitivity to address our client's needs while creating comfortable homes that explore the relationship between art, structure, timeless design and the Northwest landscape.



Brian Brand, AIA
Lino Granata



“Our goal is to create timeless buildings that are Northwest in character, well crafted, sensitive to site and budget.”

Brian Brand, AIA

An Urban Retreat

This waterfront residence is located on a steep and narrow site on Meydenbauer Bay in Bellevue, Washington. To accommodate the steep slope the home was conceived with a reverse floor plan. A bridge extends from the street/parking area through the residence and outwards to the lake and city views. This interior spine is accentuated with a linear skylight used to bring south light into the residence.

The upper level overlooks a lively scene including a marina, Lake Washington and Downtown Bellevue.

The spacious public areas of the upper floor are accentuated by curved roof that slopes to embrace the panorama. The 3 level home includes an elevator and a 7 car garage to accommodate the homeowner's extensive car collection.

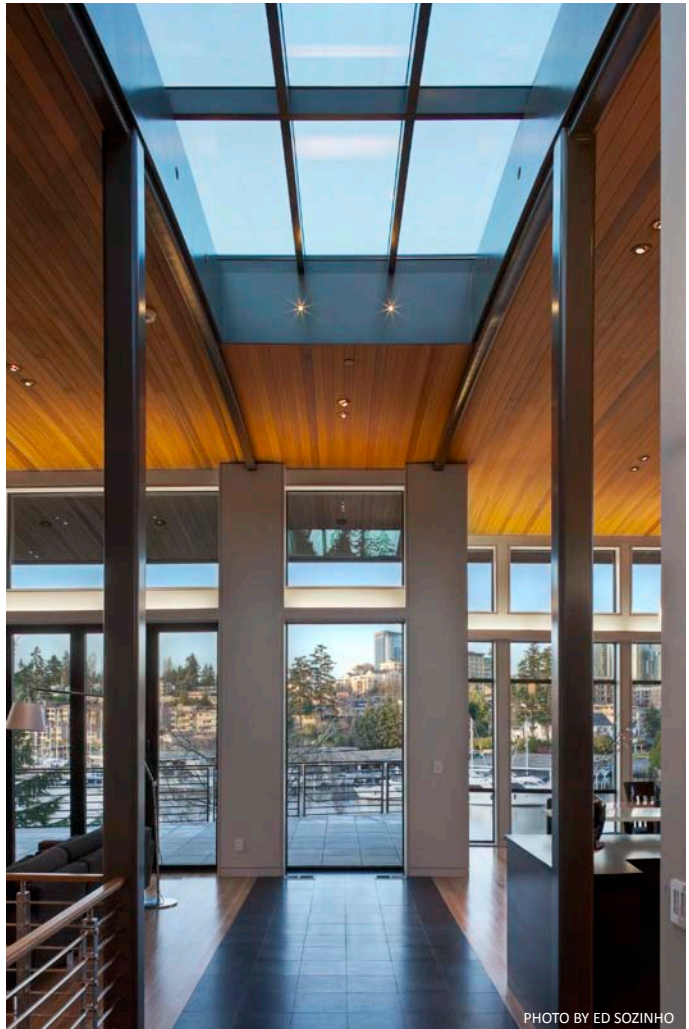


PHOTO BY ED SOZINHO

CONTRIBUTORS:

Contractor: Juris Mindenbergs | Trend Construction

4128 148th Ave NE | Redmond, WA 98052 | 425.885.5333

Interior Designer: Robin Luchsinger | Robin Luchsinger Interior Design

14418 186th PL NE | Woodinville, WA 98072 | 206.229.0322



ALEX HAYDEN

SEATTLE HOMES

& LIFESTYLES

SUBSCRIBE and receive our beautiful print magazine 7 times a year!

AND, VISIT US ONLINE at SeattleHomesMag.com for:

- Stunning architecture and design
- Luscious local gardens
- Our Design Dish blog
- Shopping finds and tips
- Professional designers' portfolios
- Local events and happenings
- A subscription to our e-newsletter

SEATTLE HOMES & LIFESTYLES | a Network Communications publication
(206) 322-6699 | 3240 Eastlake Ave. E., Ste. 200, Seattle, WA 98102
SeattleHomesMag.com